

# DRIVING MULTIPLE PIEZO MOTORS ON A SINGLE WORKSTATION

The CONEX-AGAP application is designed to control a single piezo motor positioner. For customer configurations using several positioners, it is necessary to launch several instances of the applet in order to control each positioner individually, although they will not be synchronized.

The standard installation does not allow multiple instances to be opened on the same workstation, so it is necessary to duplicate the applet installation by following the procedure described below.

This procedure applies equally to the following applets:

CONEX-AGP-2.0.0

CONEX-AGAP-2.0.0

The following example documents the installation of the CONEX-AGAP-2.0.0 applet to control two CONEX-AG-M100D piezo motor positioners.

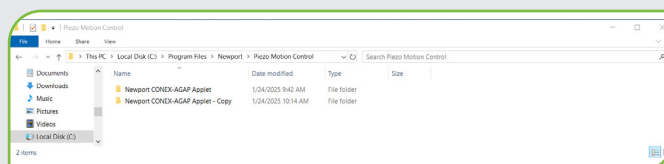
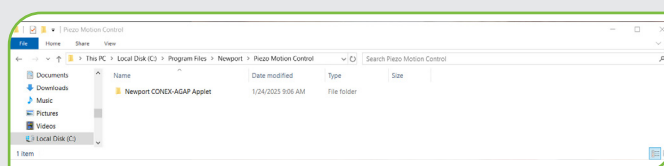
## APPLET INSTALLATION

- Download the applet from the website :  
*CONEX Compact Bi-directional Absolute Positioning Mirror Mount*
- Extract files
- In the CONEX-AGAP-2.0.0 folder run **Setup.exe**
- Select installation type according to operating system and validate using **OK** button.
- Select **Next**.
- Select users and folder installation then validate using **Next** button.
- Confirm using **Next** button to start installation.
- When installation is complete click **OK** to exit.

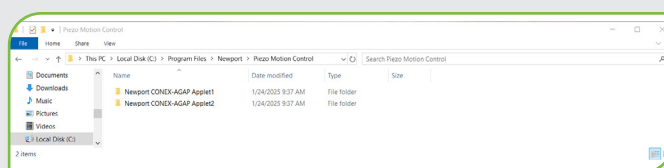
By default, the applet is installed in “Local Disk (C:)\Program Files\Newport\Piezo Motion Control\”

## II. Duplicating Applet installation

Once the CONEX-AGAP-2.0.0 applet installed, using Copy/Paste function of the file manager, duplicate the folder **Newport CONEX-AGAP Applet**



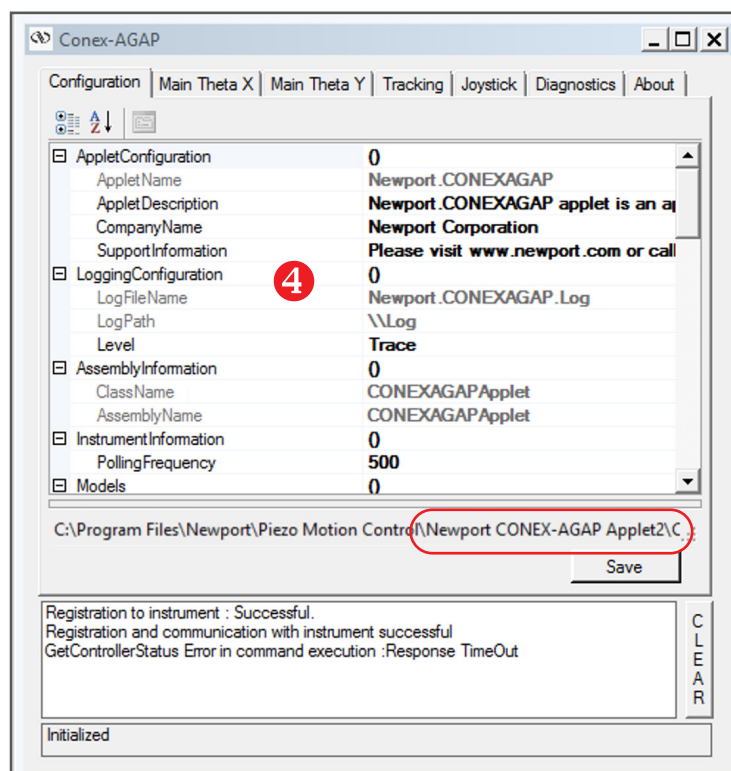
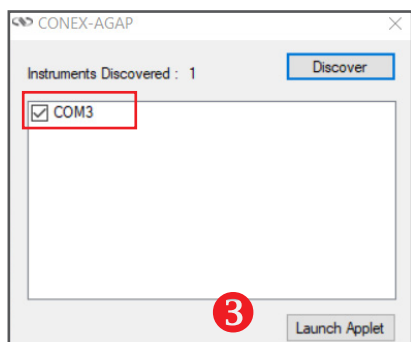
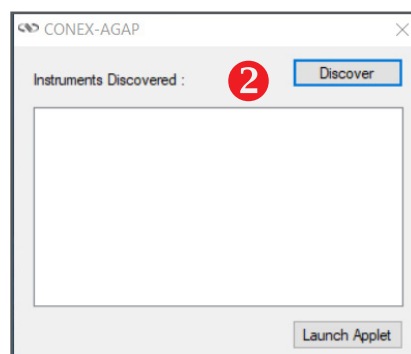
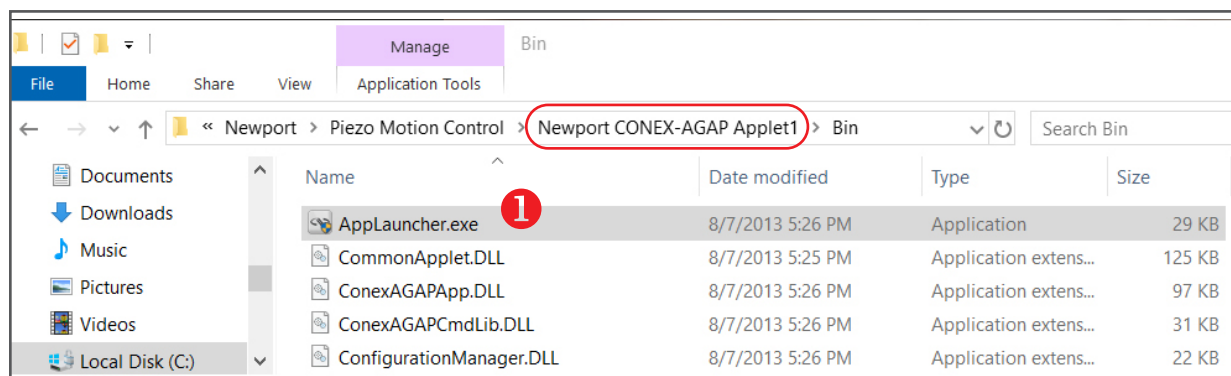
Rename for example to Applet1 and Applet2.



Note: renaming applets according to the positioners ID may prove useful during use.

## III. Launching several instances of AGAP Applet

- Run the first instance of the applet by executing the **Applauncher.exe** program in the : C:\Program Files\Newport\Piezo Motion Control\Newport CONEX-AGAP Applet1\Bin\
- In the connection window, click on the Discover button, and the list of available communication ports appears.
- Select the communication port to which positioner #1 is connected, then validate by clicking on the Launch Applet button.
- The applet window opens on the Configuration tab.



Repeat the operation for the second instance from the :

C:\Program Files\Newport\Piezo Motion Control\Newport CONEX-AGAP Applet2\Bin\ selecting the communication port to which **positioner #2** is connected.

Both instances of AGAP Applet are displayed and piezo motor positioners can be controlled separately on the workstation.

